

Executive Brief

ALTCHA® Sentinel for Enterprises

Overview

ALTCHA Sentinel is an enterprise-grade, fully self-hosted bot-protection and anti-spam platform designed for organizations that require **maximum control, compliance, and operational independence**. Unlike cloud-based CAPTCHA services, Sentinel runs entirely within your infrastructure, **ensuring full data ownership, predictable costs, and zero reliance on external providers** such as Google, Cloudflare, or hCaptcha.

Sentinel combines a modern, **frictionless CAPTCHA** with **advanced detection capabilities** — including **machine-learning classifiers, threat intelligence, similarity analysis, and adaptive risk scoring** — to protect forms, APIs, authentication flows, and user-generated content at scale. Its architecture **supports high-availability deployments, multi-region clusters, and strict data-residency requirements**, making it **suitable for regulated industries and government environments**.

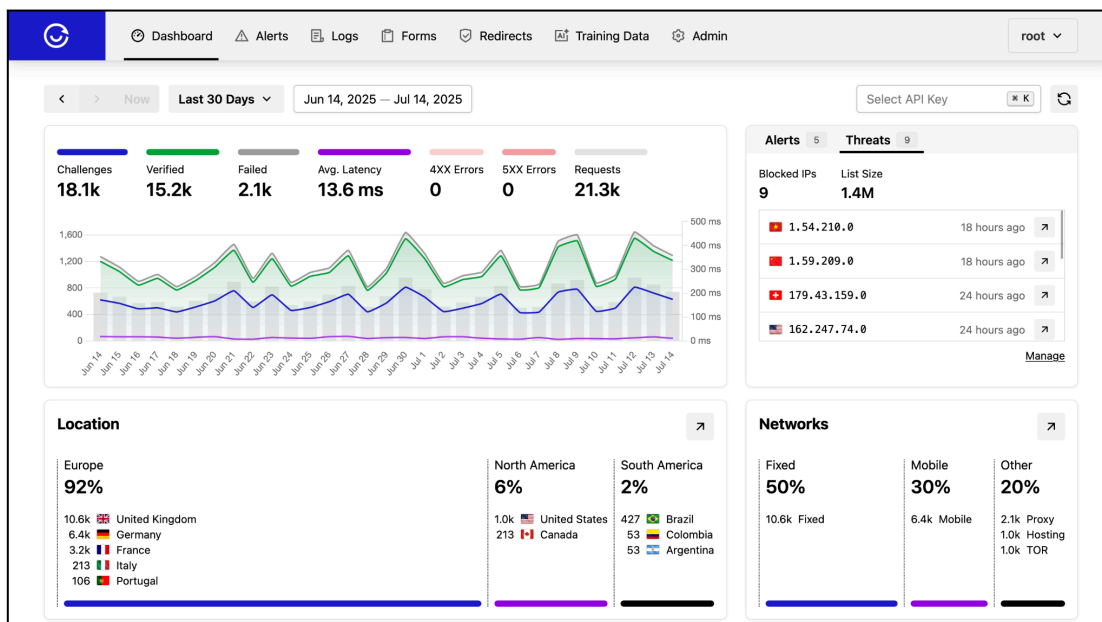
Organizations choose ALTCHA Sentinel to eliminate:

- **External dependencies** that cause outages when cloud providers fail
- **Compliance risks** from third-party data transfer
- **Unpredictable per-request billing** from cloud CAPTCHA vendors
- **Legacy CAPTCHA frustration** that harms accessibility and user experience

With clear licensing, enterprise support options, and the ability to run anywhere (cloud, on-prem, hybrid, air-gapped), **ALTCHA Sentinel provides a future-proof, transparent alternative to proprietary CAPTCHA ecosystems**.

ALTCHA Sentinel Dashboard

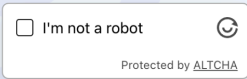
Real-time insights and analytics at a glance. Monitor traffic, verifications, and security events with an intuitive, easy-to-use interface.



ALTCHA Widget

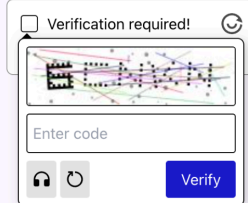
Fully customizable anti-bot widget that adapts to your site's look and feel. Supports 50+ languages, making it perfect for global audiences while keeping spam at bay.

Frictionless Captcha



The system defaults to a [Proof-of-Work \(PoW\)](#) verification method, eliminating visual puzzles or disruptive challenges. This approach balances security with accessibility, offering an unobtrusive Captcha solution suitable for most users.

Code Captcha



For cases flagged as high-risk, the protection escalates to a secure [code challenge](#). This includes an audio component, ensuring adherence to accessibility regulations like EAA and WCAG without compromising security.

1. What Is ALTCHA Sentinel

- Originating from ALTCHA's open-source core, Sentinel **builds on the open-source offering with advanced security features.**
- Instead of relying on cloud services, Sentinel can be **deployed on-premises, providing full data ownership and removing external dependencies.**
- It intelligently adapts to risk – using *adaptive Captcha, machine learning classifiers, threat intelligence*, and more – to **block abuse without degrading the user experience.**

2. Strategic Advantages

Data Ownership & Control

- Fully self-hosted – your data stays in your infrastructure; no external services; no third-party calls.

Regulatory Compliance

- Compliant with major global regulations: GDPR, CCPA, HIPAA, LGPD, PIPL, and more.

Operational Reliability

- Engineered for high-availability deployments and clustering; no surprise downtime from third-party APIs.

Transparency & Auditability

- Open-source components and integration libraries enable full code transparency and audit; vital for security-sensitive environments.

Trusted by Enterprises

- Used by large organizations and government agencies in the E.U. and worldwide, demonstrating scale and trust.

3. Compliance & Legal Considerations

ALTCHA Sentinel is designed for organizations with strict regulatory, privacy, and accessibility requirements. Because Sentinel is fully self-hosted, **no data leaves your infrastructure, simplifying compliance** and eliminating the need for a Data Processing Agreement (DPA).

Self-Hosting & Data Control

- All processing occurs inside your environment – your servers, your network, your security perimeter.
- No user data, telemetry, or request metadata is sent to ALTCHA or elsewhere.
- This architecture **eliminates third-party data exposure risks and supports strong governance policies**, including internal audit requirements and industry-specific compliance mandates.

Data Residency & Sovereignty

- **Full control over where data is stored** and processed.
- Supports **regional or in-country deployments** (EU, US, APAC, etc.).
- Suitable for **strict jurisdictions** where external cloud CAPTCHA solutions are non-compliant.

Regulatory Alignment

ALTCHA Sentinel's design helps organizations **meet key global regulatory obligations**, including:

- **GDPR (EU)**
No personal data is transferred to third parties; processing remains fully on-prem.
- **CCPA / CPRA (California)**
No "sale" or "sharing" of user data; reduces legal exposure.

-
- **HIPAA (US)**
Suitable for healthcare environments because no PHI is transmitted externally.
 - **LGPD (Brazil), PIPL (China), and other data-protection laws**
On-prem architecture supports strict localization requirements.

Because ALTCHA does not act as a cloud service processor, most traditional data-processing concerns (DPA, SCCs, cross-border restrictions) do not apply.

Accessibility & EAA Compliance

ALTCHA Sentinel is engineered to ensure inclusivity and compliance with accessibility standards:

- **WCAG 2.2 AA:**
ALTCHA designs its challenge and fallback systems to be operable without vision, sound, or fine motor skills.
- **European Accessibility Act (EAA):**
Provides a compliant alternative to image- or puzzle-based CAPTCHAs, making digital services accessible to all EU users.
- **Keyboard-only operation**, screen-reader compatibility, and non-visual challenge mechanisms ensure equitable access.

This makes Sentinel suitable for public-sector deployments, financial services, healthcare, and other sectors with strict accessibility mandates.

4. Deployment & Support Models

a. On-Premises Deployment

- Your IT team deploys and operates Sentinel (e.g., via Docker, Kubernetes).
- Full operational control: scale, cluster, integrate with SSO, logging, etc.

b. Managed Deployments

- ALTCHA's team operates a fully managed Sentinel cluster on infrastructure of your choice (AWS, private cloud, etc.).
- Suited for organizations that prefer to offload the operational burden but retain data control.

5. Technical & Integration Highlights

- The engineering team can leverage a **rich technical documentation**: integration guides, libraries and plugins, migration guides (e.g., from reCAPTCHA/hCaptcha).
- Sentinel **supports advanced features**:
 - Adaptive Captcha
 - Autopilot (dynamic risk-based policies)
 - Classifier (ML / NLP-based spam detection)
 - Threat Intelligence (blocklists, live IP analysis)
 - Similarity detection & training data (pattern recognition for spam)
 - Rate limiting (contextual, multi-layer)
 - Phishing detection, language detection, link/redirect protection.
 - Analytics and reporting powered by ClickHouse, enabling fast, high-volume data analysis and detailed insights.
- Contains **well-documented installation pathways**: Docker, Kubernetes, Azure, AWS, SSO, clustering, etc.

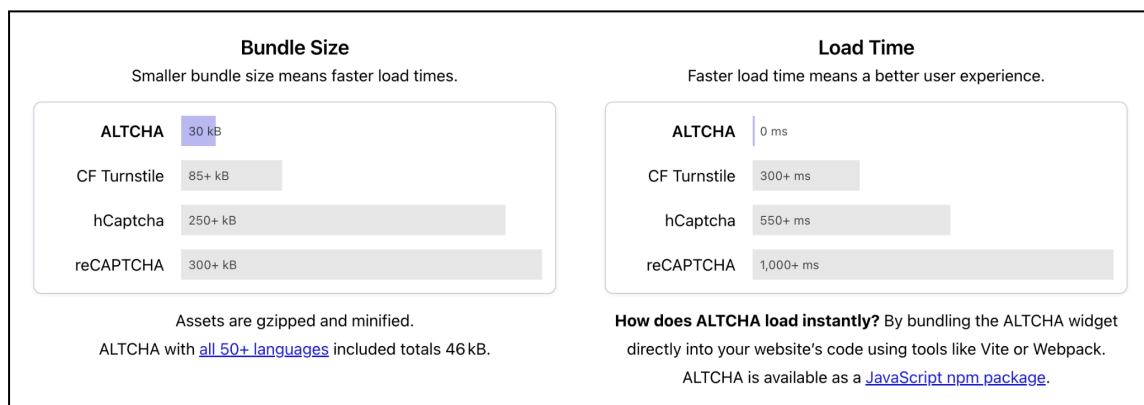
6. Integration Options

ALTCHA Sentinel integrates seamlessly with your existing applications, giving your teams flexibility without adding complexity. Our solution supports a **wide range of platforms**, including traditional websites and mobile apps, through simple, pre-built connectors.

Key Highlights:

- **Web & Mobile Ready** – Easily add ALTCHA to web pages with JavaScript or integrate into mobile apps built with React Native or Flutter.
- **Server-Side Support** – Libraries available for popular backend languages, allowing smooth integration with your infrastructure.
- **Fast & Lightweight** – Designed to minimize impact on user experience while ensuring enterprise-grade protection.
- **Flexible & Future-Proof** – Supports multiple frameworks and languages, enabling adoption across diverse development environments.

ALTCHA's integration options ensure that deploying enterprise-grade anti-spam is straightforward, scalable, and consistent across all your digital channels.



Lightweight & Fast – Small bundle size ensures minimal impact on page load, delivering faster performance and a smoother user experience.

7. Onboarding & Go-To-Market

- **Onboarding Process:** Quick, low-friction – self-service + documentation + optional expert assistance.
- **Trial Option:** Free 30-day trial available, enabling proof-of-concept within your environment.
- **Purchase:** Enterprise license available via ALTCHA's customer portal.

8. Risk & Considerations

While Sentinel removes many risks of external CAPTCHA services, adopting a self-hosted solution requires awareness of the following:

Operational Responsibility

- Your team manages deployment, updates, monitoring, and uptime (unless using Managed Deployment).
- Requires baseline DevOps/SRE capability.

Infrastructure Footprint

- Sentinel adds a small but predictable infrastructure cost (servers/Kubernetes resources). Needs to be factored into capacity planning.

Integration & Migration

- Replacing existing CAPTCHA services may require minor code changes and coordination across product, security, and compliance teams.

Security Ownership

- Access control, network security, and patching must follow internal best practices.
- Managed Deployment is available for organizations wanting reduced operational burden.

Support Expectations

- Selecting the correct support tier is important for aligning response times to business-critical workloads.

9. Business Case Highlights

- **Cost saving:** For high-volume verification, Sentinel is dramatically cheaper than cloud CAPTCHA services (e.g., €600 vs €3,500+ for 3 million verifications).
- **Brand trust & user experience:** No more jarring puzzles for users; smoother UX and invisible verification improves conversions.
- **Compliance & security:** Helps drive your data sovereignty and risk mitigation goals.
- **Future-proofing:** The model supports clustering, scaling, and policy automation as threat landscapes evolve.

10. Pricing & Support

ALTCHA Sentinel uses a fixed monthly (or annual) license with unlimited verifications, making it **fundamentally different from consumption-based CAPTCHA services**.

License Structure

- **Enterprise License** (Core Offering)
 - **Fixed price €600 / US\$700 per month**
 - Unlimited deployments, clusters, and environments (dev/stage/prod).
 - Unlimited verification volume — no per-request billing.
 - Includes all Sentinel enterprise features, updates, and security enhancements.
- **Managed Deployment** (Optional Add-on)
 - ALTCHA team operates and maintains a dedicated cluster on infrastructure of your choice (AWS, private cloud, etc.).
 - Billed as an additional service fee on top of the license.
 - Ideal for organizations that prefer to offload operational overhead.

- **Billing**
 - Monthly automated billing (card or preferred method).
 - For longer terms, procurement-friendly invoicing via bank transfer.
 - Discounts available for annual (20% off), and bi-annual (10% off) terms.
 - Perpetual licensing options available.

Support Plans

- **Basic Support**
 - Included in the price of the license
 - Best-effort response time, no SLA
 - Email only support channel
- **Enterprise Support** (€300 / US\$350 per month)
 - 8-hour response time SLA
 - Within hours avg. resolution time
 - Email only support channel
- **Enterprise Live Support** (€600 / US\$700 per month)
 - 4-hour response time SLA
 - Within hours avg. resolution time
 - Email and live chat support channels

Support covers: installation/configuration help, general usage guidance, bug fixes, security patches. Excluded from support: custom development or feature requests, on-site work or consulting, remote direct access to your infrastructure.

Cost Comparison Example

- Traditional CAPTCHA (e.g., reCAPTCHA Enterprise):
 - ~€3,500+ per month for ~3 million verifications.
- ALTCHA Sentinel Enterprise:
 - ~€600 per month for the same scale (plus minimal infrastructure cost).

This provides stable budgeting, eliminates unpredictable traffic-related spikes, and drastically reduces total cost of ownership.

Who This Pricing Model Benefits Most

- High-traffic platforms
- Enterprises seeking predictable OPEX
- Regulated industries requiring data residency without cloud vendor lock-in
- Organizations consolidating multiple CAPTCHA or anti-spam systems into a single on-prem solution

11. Summary

ALTCHA Sentinel gives enterprises complete control over bot protection by running entirely within their own infrastructure – eliminating third-party data exposure, unpredictable billing, and dependency on external CAPTCHA providers. It offers modern, accessible, high-accuracy detection powered by advanced security features, all with a fixed, transparent licensing model.

For organizations prioritizing security, compliance, reliability, and user experience, Sentinel provides a future-proof, high-trust alternative that scales effortlessly across applications and regions.

12. Contact

Contact person: **Daniel Regeci**
Founder, CEO, and lead engineer
BAU Software s.r.o., Czechia

Email: hello@altcha.org

Website: <https://altcha.org>

13. Links

- General Information: <https://altcha.org/docs/v2/enterprise/>
- Sentinel Documentation: <https://altcha.org/docs/v2/sentinel/>
- Pricing: <https://altcha.org/docs/v2/sentinel/pricing/>
- EULA: <https://altcha.org/docs/v2/sentinel/eula/>
- Support Policy: <https://altcha.org/docs/v2/sentinel/support-policy/>